



SECTOR 28-29





WELCOME TO  
**WORLD-CLASS LIVING**





## HOLISTIC LIVING AT THE SCALE OF A SMALL CITY





## DESIGNED IN THE MOST MODERN WAY

CLEAN, PEACEFUL AND A GREEN  
TOWNSHIP

WIDE AND WELL PLANNED  
ROADS

A PLETHORA OF COMMERCIAL,  
INSTITUTIONAL AND  
RESIDENTIAL SETTLEMENTS  
UNDER ITS UMBRELLA





STRATEGICALLY  
LOCATED

PRIME LOCATION  
PRESTIGIOUS ADDRESS





LOCATED MIDWAY  
BETWEEN DELHI AND  
CHANDIGARH  
ON NH-1

330 ACRES  
DEVELOPMENT

SECTORS 28 AND 29,  
KARNAL







## DISTANCE FROM IMPORTANT LANDMARKS IN KARNAL

Upcoming ISBT	0.5 Km
Kalpana Chawla Medical Institute and Hospital	2.5 Km
Model Town	3.0 Km
Bus Stand	3.0 Km
Nirmal Kutiya	4.0 Km
Proposed Airport	5.0 Km
Railway Station	7.0 Km





# PLOTS

RESIDENTIAL | COMMERCIAL | INSTITUTIONAL

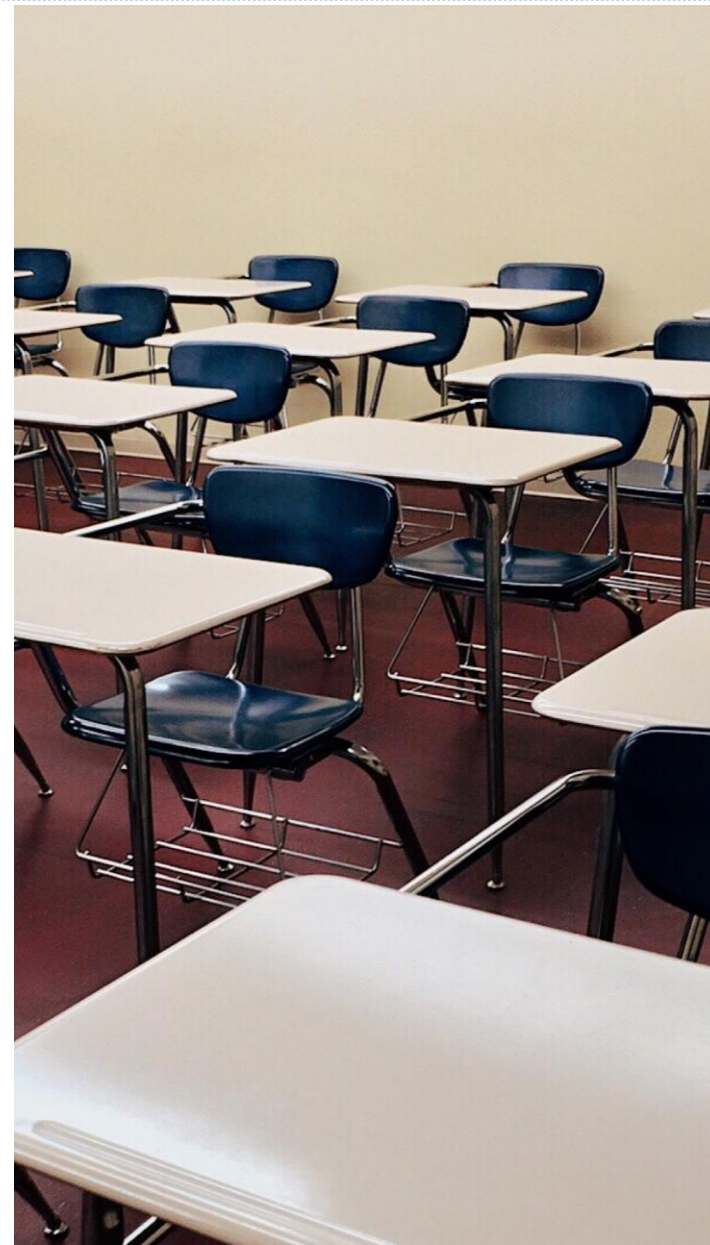




RESIDENTIAL



COMMERCIAL



INSTITUTIONAL





THOUGHTFULLY  
DESIGNED



# STATE-OF-THE-ART INFRASTRUCTURE

The township, a class above competing housing projects in Karnal, is **designed to cater to the needs of its residents**, both basic and aspirational, scaled to a **global level**.







The township, a class above competing housing projects in Karnal, is **designed to cater to the needs of its residents**, both basic and aspirational, scaled to a **global level**.



POWER SUB STATION



TREATED WATER SUPPLY



24x7 SECURITY



CONVENIENCE STORE





## SEWAGE TREATMENT PLANT (STP)

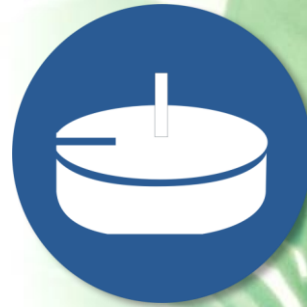
A network of **sewage treatment plants** ensures that all waste water is recycled within the township, making it a near **zero discharge development**.

## UNDERGROUND WATER TANK

**Underground water tanks** system with pneumatic pressure pumps

## RAIN WATER HARVESTING

**Efficient rain water harvesting systems** have been used to maintain the ecological balance scientifically and systematically.



# EDUCATIONAL INSTITUTIONS





# ALPHA CENTER

Alpha Center, an **over 42,000 sq. ft. recreational and entertainment** destination designed to be the finest in the region.





# TOP-OF-THE-LINE PRO LEVEL SPORTING FACILITIES

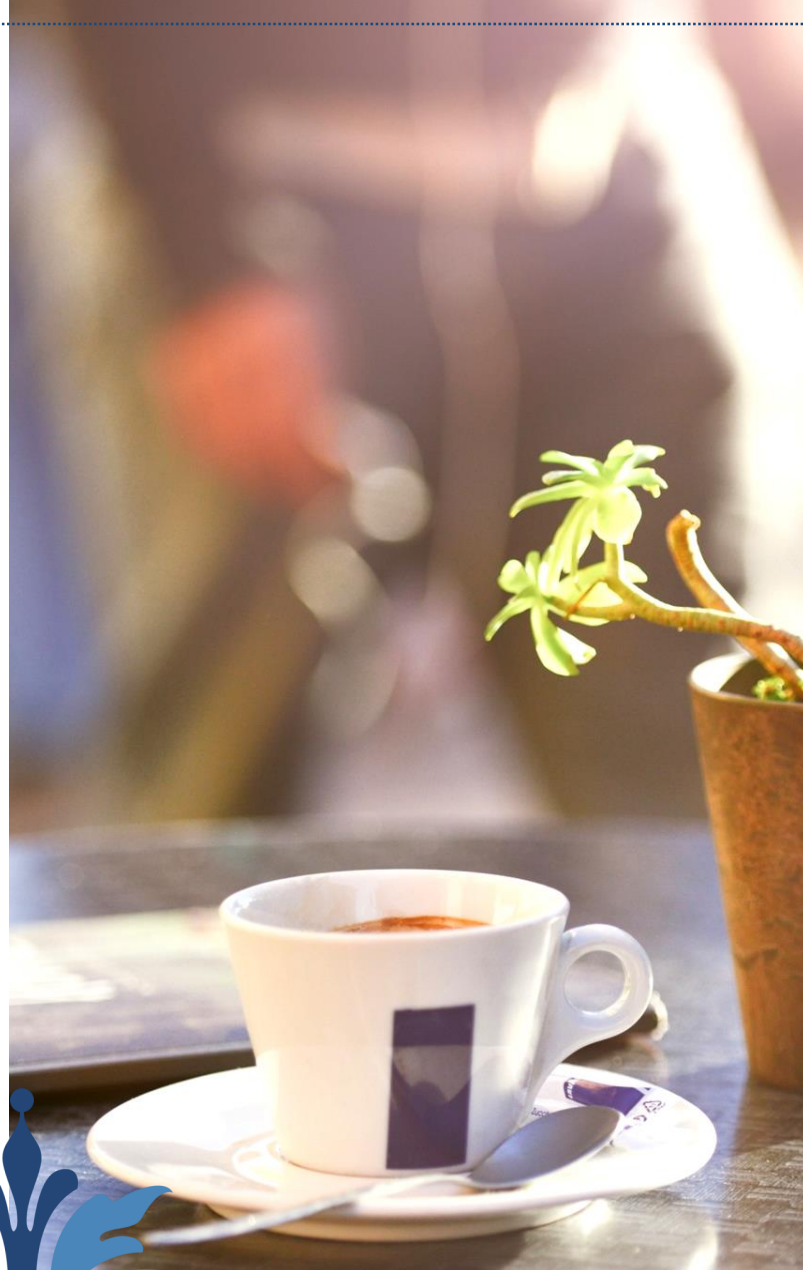
including air-conditioned squash and badminton courts, swimming pool, gymnasium, steam and sauna, tennis court, billiards and table tennis.











**BANQUET HALLS**

**MEMBERS CAFÉ**

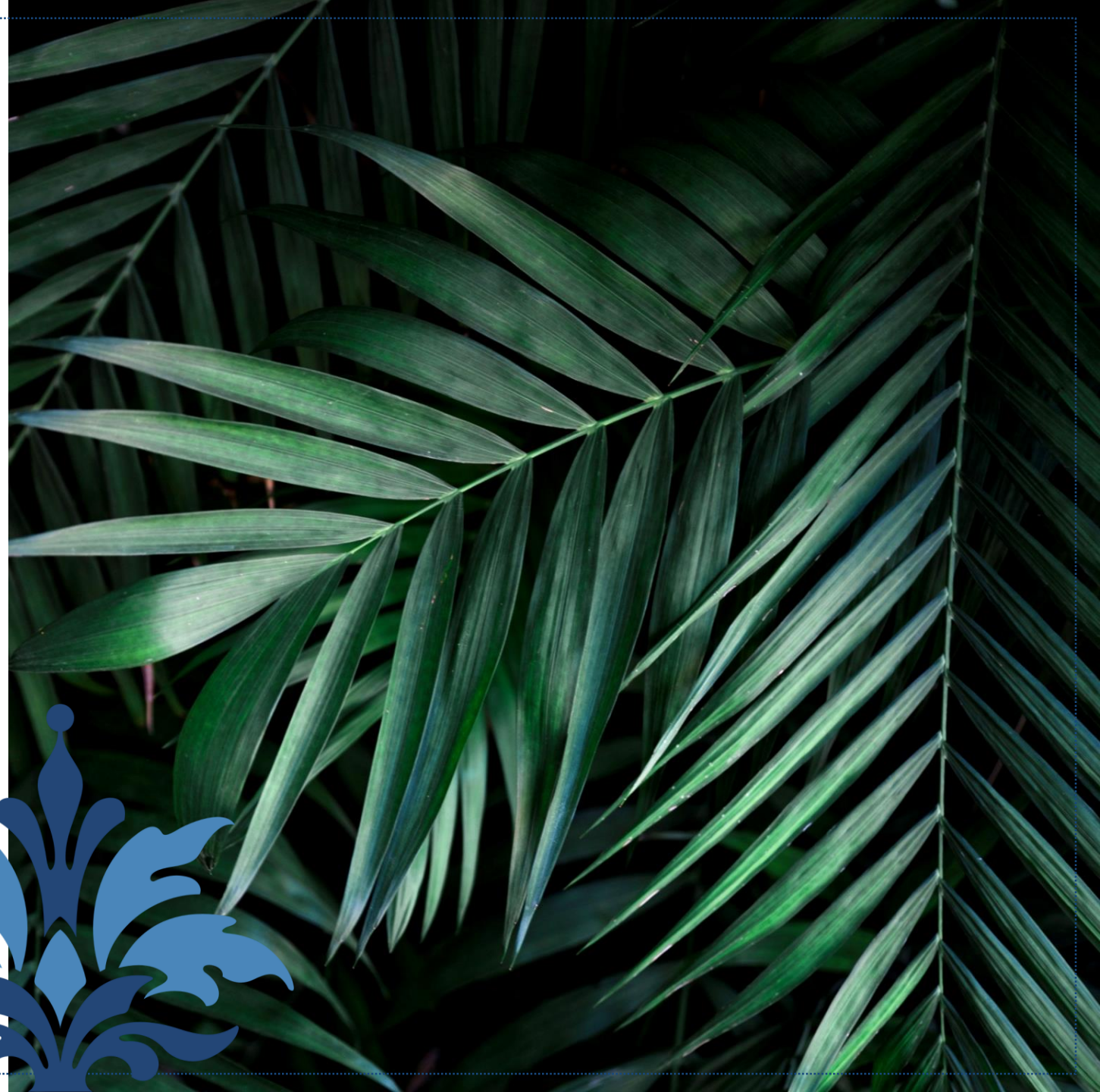
**RESTAURANT &  
BAR**





# GREEN ENVIRONMENT

The township that comprises of plots and villas, has been designed to offer **an eco-friendly green environment** with more than **20,000 trees** being planted in the city, uninterrupted water supply, safe drinking water from state-of-the-art water treatment plant and 24\*7 water supply.





## DEDICATED GREEN SPACES

Alpha International City Karnal is your window to nature's beauty and wonder. **Dedicated green spaces and beautifully manicured gardens** integrate seamlessly with living spaces.





## TRANQUIL IN GREEN

The emerald of Karnal, Alpha International City is an integrated green township facility designed to accommodate retail and commercial developments along with residential plotted development.

[Click here](#) to watch the project walk through.





PAYMENT PLAN  
&  
PRICE LIST



## PRICE LIST

<u>Plot Area</u>	<u>Sale Price</u>	<u>Timely Payment Rebate</u>
250 Sq. Yard	Rs. 19,551	Rs. 1,000/ Sq. Yard
360 Sq. Yard	Rs. 19,551	Rs. 1,500/ Sq. Yard
500 Sq. Yard	Rs. 19,551	Rs. 2,000/ Sq. Yard
970 Sq. Yard	Rs. 19,551	Rs. 2,500/ Sq. Yard



## PAYMENT PLAN

<u>Stage</u>	<u>BSP</u>	<u>Timely Payment Rebate</u>			
		<u>Plot Size</u>			
		250 Sq. Yard	360 Sq. Yard	500 Sq. Yard	970 Sq. Yard
At the time of booking	20%				
Within 90 days from the booking	20%	Rs. 250	Rs. 375	Rs. 500	Rs. 625
Within 90 days from the booking	20%	Rs. 250	Rs. 375	Rs. 500	Rs. 625
Within 90 days from the booking	20%	Rs. 250	Rs. 375	Rs. 500	Rs. 625
Within 90 days from the booking	20%	Rs. 250	Rs. 375	Rs. 500	Rs. 625







## COMPLETED PROJECTS

### CONDOMINIUMS



GurgaonOne, Sector 22, Gurgaon



GurgaonOne, Sector 84, Gurgaon



MeerutOne, Meerut (U.P.)

### TOWNSHIPS



Alpha International City, Karnal



Alpha International City, Amritsar



Alpha International City, Fatehabad

### COMMERCIAL & RETAIL



AlphaOne, Ahmedabad



AlphaOne, Amritsar



Golf View Corporate Towers

[Alpha International City, Karnal](http://www.alphainternationalcity.com)  
[Sector 28-29, G.T. Road](http://www.alphainternationalcity.com)  
[Karnal -132001](http://www.alphainternationalcity.com)

Email: [sales@alphacorp.in](mailto:sales@alphacorp.in)  
Website: [www.alphacorp.in](http://www.alphacorp.in)

For Sales Enquiry

 [\*\*+91 9555 280 280\*\*](tel:+919555280280)

Meticulously maintained and managed by

**ALPHA**CORP

- License Nos. 296 to 301 of 2005 dated Dec 16, 2006 and License Nos. 948 to 955 of 2006 dated May 15, 2006 obtained from the Director General, Town & Country Planning, Haryana for development of a residential colony on land admeasuring 141.412 acres.
- License No. 29 of 2011 dated April 05, 2011 obtained from the Director General, Town & Country Planning, Haryana for development of a residential colony on and admeasuring 85.569 acres.
- Directorate of Town & Country Planning, Haryana has issued Part-Completions in respect of the above licences vide Memo no. LC-728-JE(VA)-2010/10718 dated 28.08.2010, LC-728-Vo(III)JE(BR)/2013/60937 dated 17.12.2013 & vide Memo no. LC-632D-PA(B)-2018/12306 dated 19.04.2018.
- The aforementioned licensed land of 226 acres is under mortgage with YES BANK LTD. Chanakya Puri, New Delhi. The Developer company shall provide NOC from the Mortgagee Bank in respect of the respective plot(s) at the time of execution of conveyance deed thereof.
- ALPHA is a registered trade mark of Alpha Corp Development Private Limited.
- Image used on slide 2,3, 6, 7, 9 12, 18 and 19 are for illustrative purpose only. Images on slide 4, 11, 14, 15, 16, 17 20 & 21 are the actual images of Alpha International City Karnal.