



MEERUT ONE

PREMIUM HOMES



MEERUT'S LANDMARK ADDRESS

APARTMENTS


VILLAS

PLOTS

RETAIL

A PREMIUM
RESIDENTIAL
DEVELOPMENT
SPREAD OVER
APPROXIMATELY
12 ACRES





CHARACTERIZED BY
ALPHA CORP'S HIGH
STANDARDS,
MEERUTONE IN
MODIPURAM ON
NH-58 IS A SOUGHT
AFTER PREMIUM
RESIDENTIAL
DEVELOPMENT.





Located in Meerut, one of the fastest growing cities of northern India, the project is slated to be a superlative landmark, offering amenities and essentials required for a lifestyle that is at par with the best metropolitan cities in the country.



OFFERING AN
ENVIABLE
BLEND OF
2 AND 3 BHK
APARTMENTS,
VILLAS AND
PLOTS





STRATEGICALLY LOCATED

PRIME LOCATION
PRESTIGIOUS ADDRESS



LOCATED ON NH 58
IN MEERUT, ONE OF
THE FASTEST
GROWING CITIES OF
NORTHERN INDIA

IMPORTANT LANDMARKS

Meerut Cantonment	0.5 km
Railway Station	6 km
Defense Colony	9 km
Meerut University	11 km



THOUGHTFULLY
DESIGNED

STATE-OF-THE-ART SOCIAL INFRASTRUCTURE



STATE-OF-THE-ART
SOCIAL
INFRASTRUCTURE



The residents will have access to a large central park, swimming pool with deck and splash pool for kids, gymnasium, landscaped courtyards and lawns for fitness activities.



JOGGING TRACKS



GYMNASIUM (MATRIX)



24x7 SECURITY



KIDS PLAY AREA



SEWAGE TREATMENT
PLANT (STP)



RAIN WATER
HARVESTING SYSTEM



FIRE FIGHTING
SYSTEM



UNDERGROUND
ELECTRIC CABLE

WELL EQUIPPED
PHYSICAL
INFRASTRUCTURE

GREEN LANDSCAPE

Lush Green Parks
Wide tree-lined roads
Pavilions / Paved Seating Areas



INTERIORS

Actual Image of Sample Flat

TRANQUIL IN GREEN

The emerald of Karnal, Alpha International City is an integrated green township facility designed to accommodate retail and commercial developments along with residential plotted development.

[Click here](#) to watch the project walk through.





FLOOR PLANS

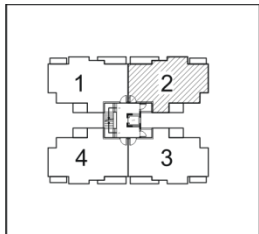
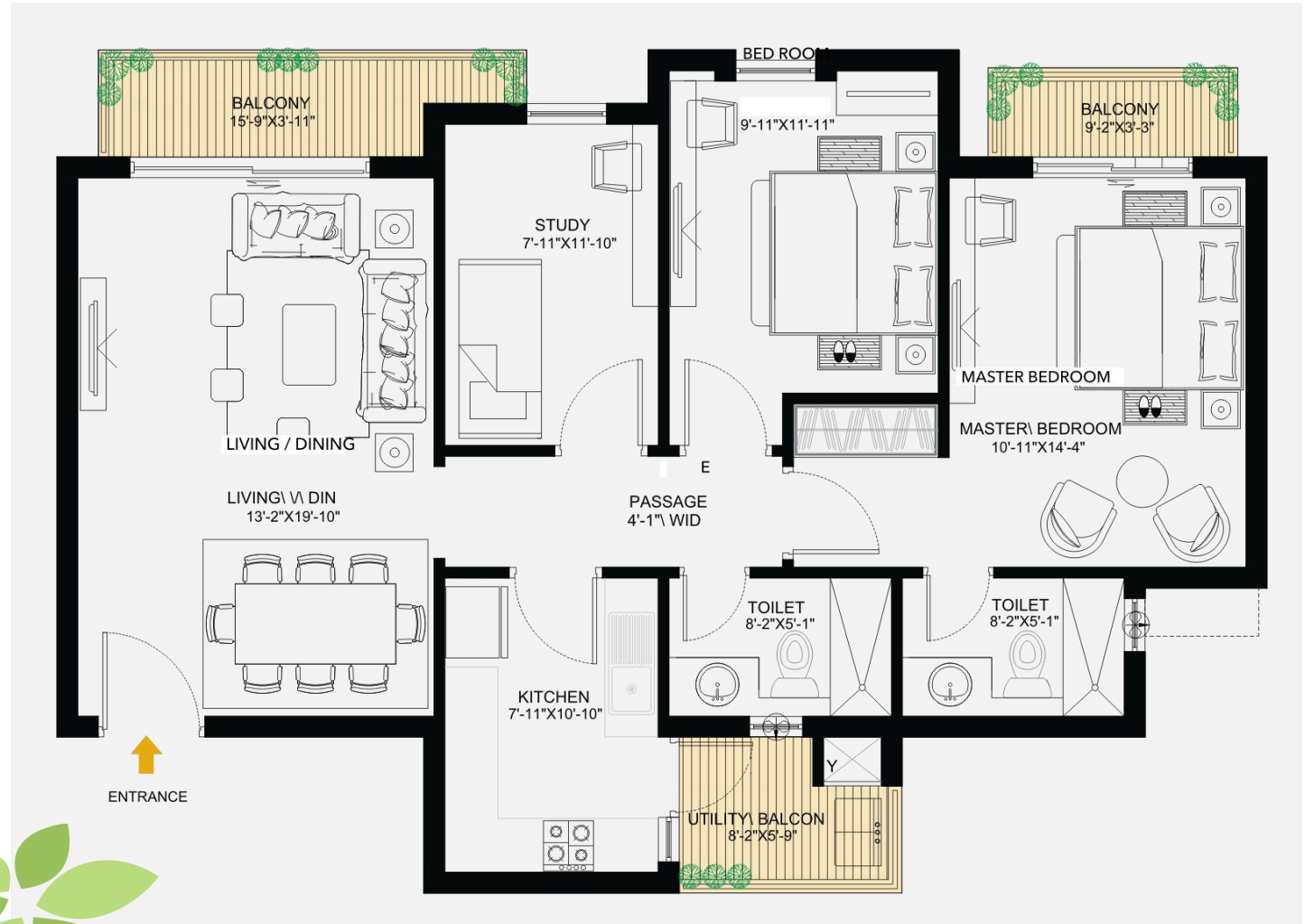
MASTER PLAN



TYPICAL FLOOR PLAN (1ST - 4TH FLOOR)

2 BHK + STUDY UNIT

UNIT AREA	SQ. MTS.	SQ. FT
UNIT SALEABLE AREA	134.52	1448
UNIT BUILT-UP AREA	108.70	1170
UNIT CARPET AREA	83.43	898



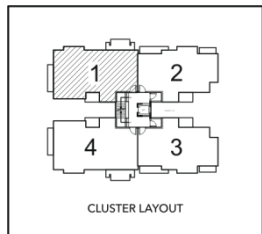
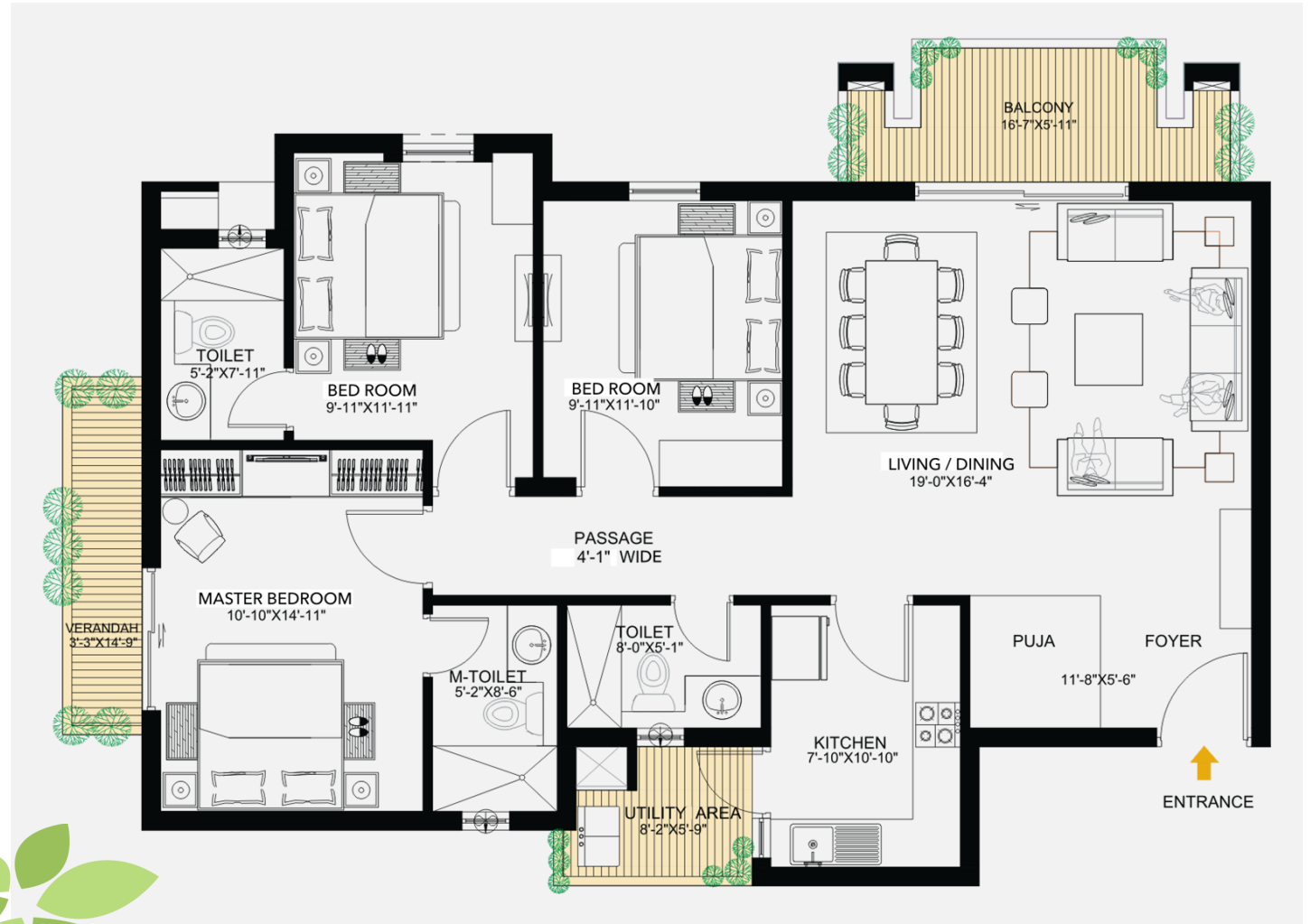
NOT TO SCALE



TYPICAL FLOOR PLAN (1ST - 4TH FLOOR)

3 BHK UNIT

UNIT AREA	SQ. MTS.	SQ. FT
UNIT SALEABLE AREA	161.09	1734
UNIT BUILT-UP AREA	130.16	1401
UNIT CARPET AREA	98.20	1057



NOT TO SCALE





M1CENTER

M E E R U T

MEERUT'S HIGH STREET
RETAIL DESTINATION

M1CENTER
M E E R U T

RETAIL DESTINATION

A classy, distinctive and so far elusive destination for the discerning shopper, is now a reality



Artistic impression

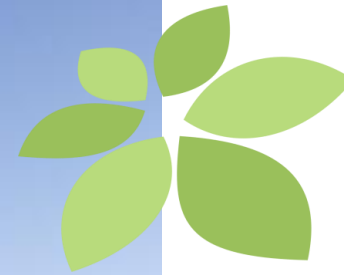
M1Center, Meerut is equipped with advanced amenities to ensure customer satisfaction.

Conveniently located panoramic lifts

Surface parking facilities for ease of both customers and retailers

Public toilets on each floor





MODERN CONTEMPORARY DEVELOPMENT

The lower floors have a **food court and restaurants**, whereas the above levels are dedicated to the well planned **office spaces and retail shops**.

This modern contemporary development made of concrete, stone, steel and glass, stands on the 75 meter (approx.) wide lane of NH 58



Artistic impression



LOCATION

The project is located on National Highway 58.

Strategically located anchor stores as destination points to attract footfall.

A unique retail experience of "open air" high-street infused shopping arcade to keep alive the concept of a traditional market place.



COMPLETED PROJECTS

CONDOMINIUMS



GurgaonOne, Sector
22, Gurgaon



GurgaonOne, Sector 84,
Gurgaon



MeerutOne, Meerut
(U.P.)

TOWNSHIPS



Alpha International
City, Karnal



Alpha International City,
Amritsar



Alpha International City,
Fatehabad

COMMERCIAL & RETAIL



AlphaOne,
Ahmedabad



AlphaOne,
Amritsar



Golf View Corporate
Towers

MeerutOne

70 km Milestone,
Rashtriya Rajmarg - 58,
Bypass, Modipuram, Meerut

Email: sales@alphacorp.in

Website: www.alphacorp.in

For Sales Enquiry

 **+91 9555 280 280**

Meticulously maintained and managed by

ALPHACORP

DISCLAIMER

M1 Center

Disclaimer: While all reasonable care has been taken in preparing this brochure, Alpha Corp Development Private Limited and associate companies reserve the right to add / delete / modify / amend any specification, facilities, terms & conditions and to revise layout plans, designs and elevations as may be required without prior notice/as per applicable law. This project is mortgage with YES bank.

MeerutOne:

Disclaimer: While all reasonable care has been taken in preparing this brochure, Alpha Corp Development Private Limited and associate companies reserve the right to add / delete / modify / amend any specification, facilities, terms & conditions and to revise layout plans, designs and elevations as may be required without prior notice.

Group housing project approved by Chief Town Planner, Meerut Development Authority, Meerut (U.P.) vide letter number 589/Building Plan Number (Zone - B)/2016, dated 30.04.2016 in the name of Epitome Real Tech Private Limited (now merged with Alpha Corp Development Private Limited).

Slide no 11 contains stock image/s for illustrative purpose only